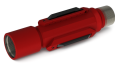


## Customer Testimonials



*"The 'Super Anchor' saved us! The other Anchors that we were using were unable to hold up to the PC Pump torque and vibration and unable to anchor the Tubing properly. Once we installed the Evolution CATA (Centralizing Advanced Torque Anchor) that problem was solved."  
9-5/8" Casing x 4-1/2" Tubing*

- Operations Engineer – [Occidental Mukhaizna L.L.C. \(Oxy\) – Sultanate of Oman](#)



*"I think the Evolution ATA (Advanced Torque Anchor) is the best Torque Anchor design in the market!"*

- Senior Manager - Alberta based PCP Systems provider



*"We at PCP International are a dealer for Progressive Cavity Pumps.*

*We highly recommend using the [Evolution Gas Separator](#) on all wells that have gas present so as to keep as much gas as possible from entering the pump.*

*It will reduce torque due to gas, and lost efficiency in the pump.*

*They are quite simple to install and easy to break down and cleanup for rerun. It has no moving parts to break.*

*We have tried other models and brands, but Evolution Brand fits well for us because they have a separator for both light and heavy crude oil."*

-[James Walter / PCP International](#)



*"Here at Oillift Technology we use your Light oil [PC Gas Separator](#) on every PC pump we run in the hole. We have never ran into any problems with any of your products we use and they do their job as needed. I have had a gas separator in the hole for a year now and we just pulled the pump about a week ago we inspected all the parts and pieces and the EOT tools were in tip top condition. I personally took the PC Gas Separator apart and inspected inside there was no wear or corrosion anywhere that I could see. And we will continue to use the EOT products on all of our PC installs."*

- Kody Selman / [Oillift Technology Inc.](#)



*"Evolution's tools are very user friendly and easy to install. Their [CRTA Anchors](#) set and release well even in deviations. Evolution's Rotators have been installed on our wells and we have never had any issues with them to date. Most have been on for more than a year and are running fine."*

-Petro-Canada / Southern Alberta Region



*"Evolution Oil Tools has provided fast and efficient service to our company on several occasions. Their products and equipment are reliable and when ordered are here on time. On emergency orders Evolution Oil Tools was there to provide service and equipment anytime of the day or night. We plan to continue using Evolution Oil Tools as one of our major suppliers for our downhole tools and completions company. The staff at Evolution Oil Tools is very knowledgeable and prompt returning calls for our requirements."*

-Bill Sowinski /Operations Manager /Master Oil Tools Inc. / Brooks, Alberta



*"We were burning out pumps about every second day, due to the Gas Separators getting clogged up, at a rig time and pump cost of about \$20,000 - \$25,000 each time!"*

*"After we installed the [Eccentric Intake](#) on those same wells, we were getting about 6 months without rig expense, replacing parts and down time and even the production string was pulled for other reasons, not due to gas separator clogging. We have had this product in over a dozen of our slant wells for 2 years now with great success!"*

-Completion Supervisor / Bonnyville, Alberta



*"We currently have the [Evolution Beam Gas Separator](#) installed on about 35 of our wells. We actually don't have any comparables to production prior to these Separators being installed, because we already knew that they increase production efficiency and so we had them installed on all of these wells as they were originally being completed. With our sand trap tubing located below the Gas Separator, there have only been two of them cleaned out to my knowledge and those production strings were pulled for other reasons."*

-Production Coordinator / [Talisman Energy Inc.](#) / Turner Valley, Alberta



*"I believe the Evolution line of [Tubing Rotators](#), are most cost effective than that of the competition. Not having serviced one yet makes me believe the durability of the product is far superior to any other models I have come across."*

-NOV/CE Franklin Ltd / Provost, Alberta

[Download Customer Testimonials PDF](#) [Want to Add Your Testimonial?](#)

Fill out my [online form](#).  
//